

Zep System III

For Flat Roof Applications

Zep System III from Zep Solar offers the fastest and least expensive way to mount PV arrays on flat roofs. With a series of snap-in, drop-in and quarter turn connections, Zep System III greatly accelerates the process of commercial rooftop installation. Zep System III eliminates the need for mounting rails, requires very few parts, and simultaneously accomplishes structural and grounding connections. With far less complexity than conventional systems, Zep System III delivers both labor and logistics savings for commercial PV projects.

Zep Compatible™

Zep System III mounting hardware is designed for use with Zep Compatible™ PV modules.



For a current list of Zep Compatible PV modules, please visit:
<http://www.zepsolar.com/modules>

Key System Benefits

Rapid installation

Ultra-low parts count

Auto-grounding

Tool-free connections

Compatible with high-wind and seismic Zep accessories

Key Technical Features

11 degree tilt angle

Ground Zep UL and ETL listed to UL 467 as grounding and bonding device

Row Connector, Rear Leg, Front Leg, Wind Diffuser, Diffuser Support, Ballast Pan and Ground Zep listed to UL 2703 as PV bonding device

Suitable For

Ballasted Applications

Anchored Applications

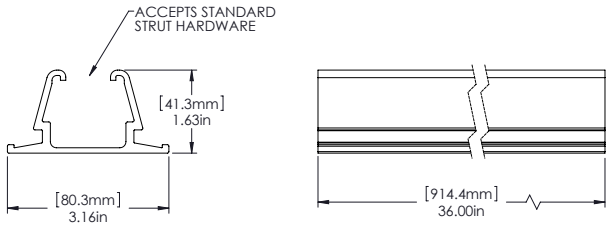
Hybrid Applications

Most common flat roof materials



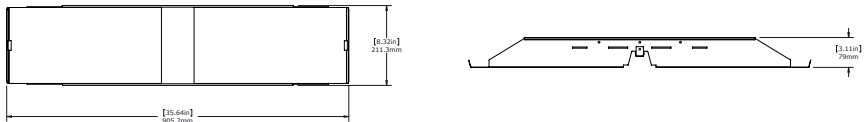
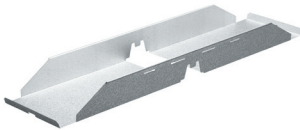
Components

Row Connector



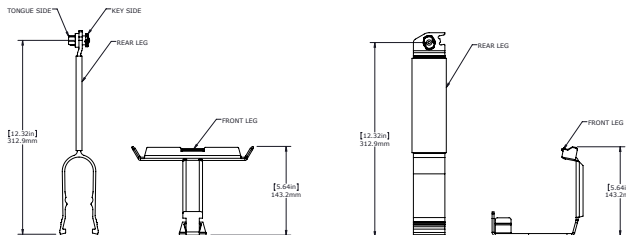
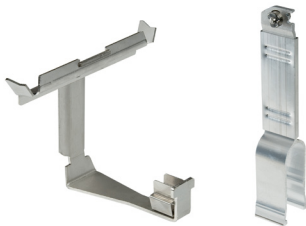
The row connector provides a point of attachment for the Front and Rear Legs and creates a rigid connection between rows. The profile of the Row Connector accepts standard strut nuts for attaching standard strut or brackets for applications that require bracing for seismic and high wind applications. UL listed to UL 2703.

Ballast Pan



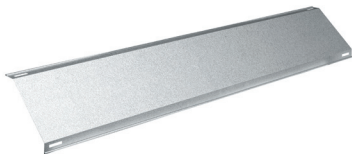
The Ballast Pan installs, by hand, over the Row Connector and receives ballast blocks to add ballast weight to the system. UL listed to UL 2703.

Front & Rear Legs



The Front Leg snaps, by hand, into the Row Connectors and receives the Zep Groove of Zep Compatible PV modules. The structural connections are auto-grounding. Front Leg UL listed to UL 2703. The Rear Leg rotates, by hand, into the Zep Groove of Zep Compatible PV modules and snaps into the Row Connectors. The Rear Leg automatically establishes east-west module grounding. Rear Leg UL listed to 2703 and ETL listed to 1703.

Wind Diffuser



The Wind Diffuser is installed on the back side of each row and reduces uplift forces due to wind by redirecting air over and around the array, balancing air pressures across the upper and lower sides of the array. UL listed to UL 2703.

Diffuser Support



The Diffuser Support provides additional rigidity along the upper edge of the module row and supports the ends of the Wind Diffusers. UL listed to UL 2703.

Ground Zep



The Ground Zep provides a point of connection between the PV array and the equipment grounding conductor and also allows for bonding jumpers at thermal breaks. One bonding jumper is required for every east-west run of 24 PV modules. UL and ETL listed to UL 467. UL listed to UL 2703.

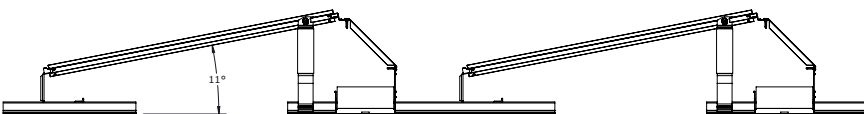
Accessories

Wire Clip



Clips into Zep Groove for ultra-fast and easy management of PV wiring and micro-inverter cables.

Array Side View



This document does not create any express warranty by Zep Solar or about its products or services. Zep Solar's sole warranty is contained in the written product warranty for each product. The end-user documentation shipped with Zep Solar's products constitutes the sole specifications referred to in the product warranty. The customer is solely responsible for verifying the suitability of ZepSolar's products for each use. Specifications are subject to change without notice. Copyright © 2010 Zep Solar, Inc. U.S. Patent #7,592,537, U.S. & Int'l Patents Pending. Last Update: March 1, 2012 1:39 PM

Visit www.zepsolar.com/resources.html for more information about our products and company.