



## Zep System II

For Flush Mount Applications

**Zep System II from Zep Solar offers the fastest and least expensive way to mount PV arrays for flush mount installations.** With a series of drop-in and quarter-turn connections, Zep System II installs up to 5-times faster than conventional mounting systems. The structural connections of Zep System II are auto grounding, eliminating the need for separate grounding hardware. And with its hyper-bonded grounding matrix, Zep System II offers the safest, most reliable way to ground PV arrays.

### Key System Benefits

Dramatically reduces installation time

Eliminates mounting rails and clip hardware

Eliminates separate grounding hardware

Ultra-reliable hyper-bonded grounding matrix

Rapid, top-accessible precision array leveling

Ultra-low parts count

Enhanced aesthetics

### Key Technical Features

TÜV tested to IEC 61215 for 5400Pa load conditions

Suitable for high wind applications

Interlock ETL listed to UL 1703 as ground bond means

Ground Zep UL and ETL listed to UL 467 as grounding and bonding device

Interlock, Hybrid Interlock (grounding), and Ground Zep listed to UL 2703 as PV bonding device

### Zep Compatible™

Zep System II mounting hardware is designed for use with Zep Compatible™ PV modules.



For a current list of Zep Compatible™ PV modules, please visit: <http://www.zepsolar.com/modules.html>

### Suitable For

Composition Shingle

Corrugated Metal

Standing Seam Metal

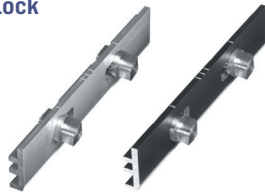
Trapezoidal Metal

Carports/Canopies

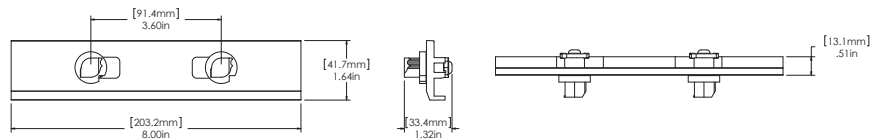


## Components

### Interlock

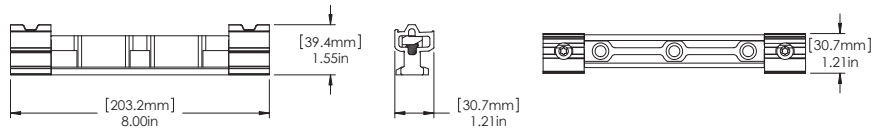
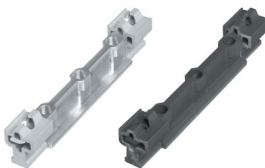


## Mechanical Information



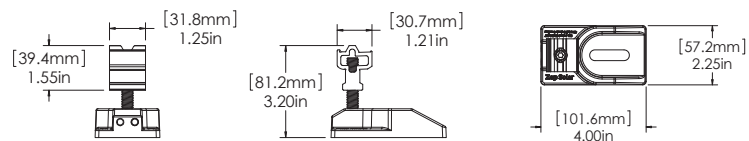
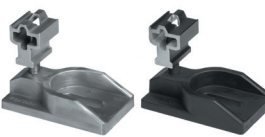
The Interlock provides north-south and east-west structural and ground bond connections creating a structurally contiguous hyper-bonded array. Interlock UL listed to UL 2703 and ETL listed to UL 1703.

### Hybrid Interlock



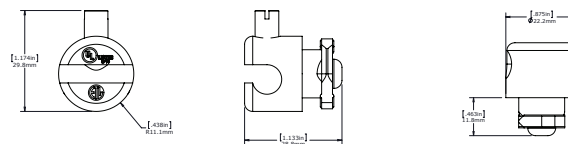
The Hybrid Interlock functions as both Interlock and Leveling Foot for areas where the structural attachment falls at an Interlock location. Hybrid Interlock (grounding) UL listed to UL 2703.

### Leveling Foot



The Leveling Foot provides a means of attachment between the PV array and the mounting surface or flashed attachment apparatus and allows for easy array height adjustment (1.25" throw).

### Ground Zep



The Ground Zep provides a point of connection between the PV array and the equipment grounding conductor. One Ground Zep is required for every 72 PV modules. UL and ETL listed to UL 467. UL listed to UL 2703.

## Accessories

### Universal Box Bracket



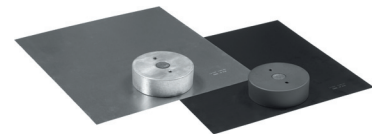
The Universal Box Bracket allows rapid attachment of electrical boxes to the module frame.

### Wire Clip



Clips into Zep Groove for ultra-fast and easy management of PV wiring and micro-inverter cables.

### Comp Mount



Comp Mounts provide a means of flashed attachment for composition shingle roofs.

### Array Skirt



The Array skirt facilitates easy front-row installation while providing a clean look at the front of the PV array (available in both clear and black finish).

### Array Skirt Cap Set



The Array Skirt Cap Set provides an aesthetic cover for the exposed end of the Array Skirt. Made of anodized aluminum, each set comes with two Skirt Caps.

### Zep Tool, Flat Tool



Zep Tool: 4 functions, 1 tool; Flat Tool: For inter-module removal.

This document does not create any express warranty by Zep Solar or about its products or services. Zep Solar's sole warranty is contained in the written product warranty for each product. The end-user documentation shipped with Zep Solar's products constitutes the sole specifications referred to in the product warranty. The customer is solely responsible for verifying the suitability of ZepSolar's products for each use. Specifications are subject to change without notice. Copyright © 2010 Zep Solar, Inc. U.S. Patent #7,592,537, U.S. & Int'l Patents Pending. Last Update: March 22, 2012 9:29 AM

Visit [www.zepsolar.com/resources.html](http://www.zepsolar.com/resources.html) for more information about our products and company.